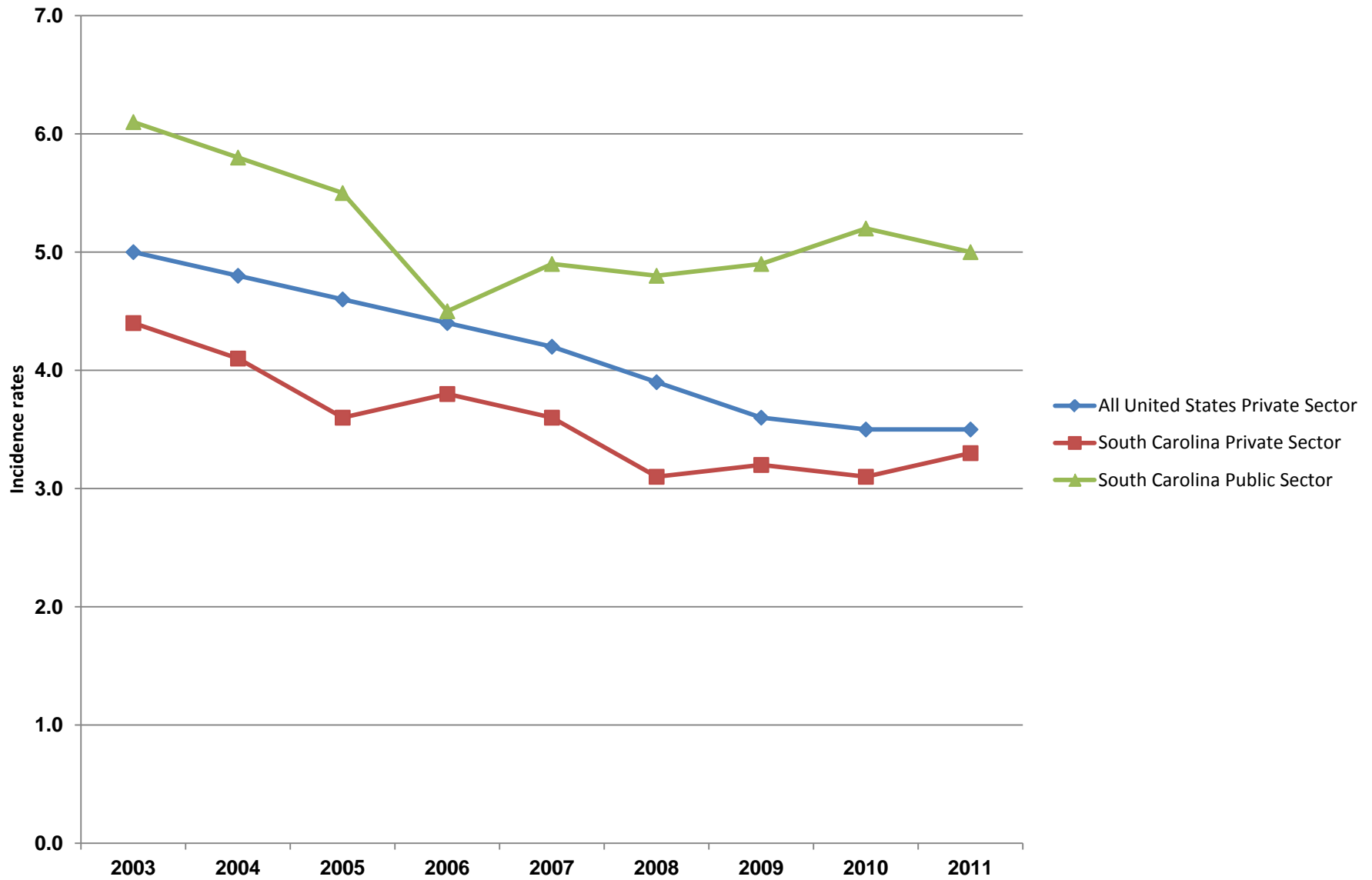


Incidence rates per 100 full-time workers for total nonfatal occupational injuries and illnesses, South Carolina and All United States, 2003-2011



SOURCE: Bureau of Labor Statistics, U.S. Department of Labor, Survey of Occupational Injuries and Illnesses in cooperation with participating State agencies.

	2003	2004	2005	2006	2007	2008	2009	2010	2011
All United States Private Sector	5.0	4.8	4.6	4.4	4.2	3.9	3.6	3.5	3.5
South Carolina Private Sector	4.4	4.1	3.6	3.8	3.6	3.1	3.2	3.1	3.3
South Carolina Public Sector	6.1	5.8	5.5	4.5	4.9	4.8	4.9	5.2	5.0